

village

Connect

December 2010/January 2011



IN THIS ISSUE

Christmas gift ideas

Festive workshops for the kids

Pantomimes showing locally

Walks from Burton on the Wolds

A healing technique you can practise on yourself

Plus events listing, gardening advice & more

Eco-friendly
goods worth
£60 to be won

See page 2

From the editor



Hello Readers

When I'm out shopping for Christmas presents, I'm always on the hunt for something different and individual. And if it's been made locally so much the better!

We have no shortage of talented and creative individuals in this area, many of them relying on craft fairs and market stalls to sell their work. You can read about an initiative to help them, and pick up some gift ideas as well, on page 6.

Christmas wouldn't be Christmas without the panto. Find out about the Harby Harlequins upcoming production, plus other pantos you can catch before and after the festive season, on page 12. And if the kids are wanting to help with the decorations round the house, we have news of some workshops that might be of interest on page 4.

Wishing you all a Merry Christmas and a Happy New Year!

Louise

Cover page photograph:
The Seven Arch Bridge in Rearsby

village Connect

Published by Wordcraft Writing & Design
2 Brook House Close, Rearsby
Leicester LE7 4YG
www.villageconnect.co.uk

Editor: Louise Lambert
01664 424254 / 07879 854882
louise@villageconnect.co.uk

Printed by AVS Print, University of Leicester
0116 252 2442
avsprint@le.ac.uk

Next issue: February/March 2011
Copy deadline: 14 January 2011

All articles are the copyright of Wordcraft Writing & Design or the individual contributor and may not be reproduced without permission.

Any views expressed in the articles do not necessarily represent those of the publisher and are the responsibility of individual contributors. Equally, the inclusion of an advertisement in the magazine is not an endorsement by the publisher of the product or service advertised.

£60 of green goods up for grabs

Enter our Christmas draw and be in with a chance of winning something unusual and eco-friendly from **The Green Place, Sileby**.

We have three prizes to give away. The first is a **voucher for £20**. This can either be spent on gifts and stocking fillers from the gift shop (a treasure trove of recycled and green products, with prices starting at just £1.50), or put towards the purchase of a recycled laptop or desktop computer from the computer shop next door. The second and third prizes are a **wind-up torch worth £20** and a **goody bag of 'smellies' worth £20***.

* Goody bag content: Twilight skin freshener, Weleda organic shampoo & conditioner pack, Fairtrade lavender pot pourri, bath salts & aromatic candle

What you'll find at The Green Place

Natural remedies from £4; wind-up gadgets from £4; musical instruments and wind chimes from £2 (the ones pictured have been made from cutlery and cost £18); bags & wallets from £2.75 (some made from recycled items such as vinyl records and tins); recycled computers from £150, and lots more!



For more information, go to www.completewasters.co.uk or phone 01509 815181



The Green Place is run by Complete Wasters, a social enterprise set up with the aim, among other things, of promoting Fairtrade, recycled and eco-friendly products. It has been based in Sileby since 2005.

The shop also sells food, and serves drinks and light snacks. Outside is a lovely garden open to visitors.

Open Wed-Sat, 10am to 4pm.

Closed in January and February.

6 Cossington Rd, Sileby LE12 7RS

To enter the draw, simply send your name, postal address, phone number and/or email address to: Christmas Draw, Village Connect, 2 Brook House Close, Rearsby, Leicester LE7 4YG. Alternatively, email the same information to louise@villageconnect.co.uk. The closing date for entries is **Monday, 13 December 2010**, after which the first three names drawn will receive the prizes mentioned and will be notified within 24 hours.



Contact Geoff Smith:

0116 269 2812

07973 776240

colbycarpets@talktalkbusiness.net

Quality carpets, laminate & cushion flooring supplied and fitted

- Expert advice, samples & prices brought to your home
- Wide range of carpets & flooring to suit all tastes
- Competitive prices
- Fast, friendly & efficient service
- Rooms cleared & old flooring removed
- Doors trimmed if required
- Satisfaction guaranteed
- 40 years experience by local tradesman

To advertise in Village Connect,
call 01664 424254 or visit www.villageconnect.co.uk

Easy walking for a winter's day

The annual **Seagrave Challenge** (mentioned in our October/November issue) is a great way to discover the Leicestershire Wolds. But if you're the kind of walker who likes to take things at a more leisurely pace, chatting to friends and stopping to enjoy the scenery as you go, the chances are you gave this 16-mile hike a miss!



photograph by Chris J Dixon

A more relaxing way to explore this lovely part of the county could be to follow one of the **Burton on the Wolds and Prestwold Parish Walks**. There are four to choose from, all circular, and all starting from and finishing at Burton Village Hall. They vary from 1 to 3 miles, so nothing too strenuous, and three of the circuits are more or less on the flat. Perfect winter walking, either before or after lunch!

Two of the walks will give you the chance to explore the village, the longer of the two taking around 40 minutes. Another will take you out past the 18th century Prestwold Hall (pictured above), home of the Packe-Drury-Lowe family for 350 years and now a venue for weddings, corporate events and parties. The final walk is fairly hilly in places, but you'll be rewarded with some great views of the surrounding countryside and Prestwold Hall. Allow one and a half hours for this 3-miler.

Burton on the Wolds is a small village 3 miles east of Loughborough and is easily reached by car via the B676. For a drink or a bite to eat, try The Greyhound Inn. Tel: 01509 880860

The Burton on the Wolds & Prestwold Parish Walks leaflet is available in libraries and information centres; it can also be downloaded from www.leics.gov.uk/parish_walks.

because of Slimming World I'm ready to party!
Carly from Liverpool
Read my story online at www.slimmingworld.com

REARSBY
Horse & Groom (skittle alley) Parking at rear
Melton Road, Rearsby
Weds 7.30pm

0844 897 8000
Contact Helen: 07949 123898 / slimmingwithhelen@hotmail.co.uk

Slimming WORLD
because you're amazing
www.slimmingworld.com

GN | gasnation™

Installations • Breakdowns • Servicing • Landlord Certs

T. 01664 840699
M. 07766 811512
E. info@gasnation.co.uk

GAS safe REGISTER
522800

Cabaret at the Abbey



West End musical theatre star **David Kent** is to hold two special cabaret evenings at Launde Abbey on **Friday 10 and Saturday 11 December**.

Winter Wonderland follows David's two sellout shows last December and will feature classic musical numbers from a variety of contemporary and classical musicals, plus a few festive favourites.

Both evenings will begin at 7pm with mulled wine and canapes, followed by a two-course supper, coffee and of course, musical entertainment from David.

The cost, including mulled wine, supper and coffee is £25.00 per person; overnight packages are available for £50.00 per person. Christmas party groups welcome.

For more information and to book, telephone 01572 717254 or visit www.launde.org.uk.

COMPUTER PROBLEMS FIXED

Patient & professional help at your home or business

Internet, Software and Hardware

Computer slow or won't start?
Internet not working? Broadband network to set up? Lost data?
Viruses & popups? Spam? etc

TUITION

How to use internet & email, MS Office, digital cameras, sat.nav.

ADVICE

on buying, avoiding problems, internet security

Dave Rowe Computing
01664 85 95 05



RATCLIFFE COLLEGE

HMC ROMAN CATHOLIC CO-EDUCATIONAL DAY & BOARDING SCHOOL AGED 3-18



ENTRANCE EXAMINATIONS DATES FOR ENTRY IN SEPTEMBER 2011

10+ examinations

Friday 21st January 2011

11+ examinations

(to include assessment for Academic Scholarships) Tuesday 11th January 2011

12+, 13+ & 14+ examinations

Saturday, 29th January 2011

13+ Academic Scholarship examinations

Mon 28th February & Tues 1st March 2011

Our March Open Morning takes place on Saturday 12th March 2011.

Tel: 01509 817000

Email: registrar@ratcliffe.leics.sch.uk

www.ratcliffe-college.co.uk

Creative fun for the kids

Museums in Loughborough and Melton have some creative seasonal activities to keep the kids amused in the run up to Christmas.

Charnwood Museum, Loughborough

18 December, 10.30am-12.30pm

ArtZone workshop: Deck Your Walls.



A chance for 8-15 year olds to make some funky Christmas decorations under the guidance of professional artists (all CRB checked). The workshop costs £5 per person (£2.50 for families on benefits). Pre-booking is essential. **To book call 01509 233754**

22 December, 10.15am 11.45am. 1.30pm, 3.00pm

Victorian Christmas Lanterns workshop

Children aged 3+ can make and decorate festive lanterns for the Christmas holiday celebrations at these sessions. £2.50 per child. All places must be booked and paid for in advance. **To book, call 01509 233754**



ArtZone is held at Charnwood Museum every Saturday in term time. It is open to all 8-15 year-olds, including those with extra needs. Each workshop is completely different, the aim being to introduce young people to a range of techniques and materials. The size of the groups is kept to a maximum of 14 to ensure that all participants have a good workshop experience.

Visit www.charnwoodarts.com/projects/artzone

Melton Carnegie Museum, Melton Mowbray

11 December, 10.15am, 11.30am, 1.30pm & 2.45pm

The Xmas Factor. Christmas craft activities for 5-12 year olds (all children must be accompanied by an adult). Lots of different things to make including cards and decorations. Although the workshop is free, pre-booking is essential. **To book, call 0116 305 3860.**



Charnwood



CUSTOMER SERVICE EXCELLENCE

South Charnwood Leisure Centre


Parkstone Road, Syston, Leicester LE7 1LY

Tel: 0116 264 0057 www.charnwood.gov.uk

AGED 14-16?

Want to get in better shape?

We have classes designed especially for you, and all suitable for both males & females!



DO YOU WANT TO BE FIT & TONED?

PUMP

FREE WEIGHTS TO MUSIC

14-16yrs Wednesdays 3.30-4.30pm

£2.25 PER SESSION-PLEASE BOOK

Junior PADBOX™



MONDAYS, 3.45-4.45pm

Years 10-11 (14-16 yrs)

£2.25 per session

Learn boxing, padding & skipping techniques while at the same time increasing fitness & co-ordination, essential in boxing.



TUESDAYS & THURSDAYS, 3.15-4.15pm

Years 10-11 (14-16 yrs). **£2.75 per session**

NOT OLD ENOUGH TO JOIN A GYM? TRY OUR REP IT OUT!

Rep It Out is designed for **14-16 year olds** and covers all aspects of training in a gym environment. With instructors present to educate safe and effective use of exercises, the sessions cover both cardiovascular and resistance training. They also incorporate core stability exercises.

Each course lasts **8 weeks*** and you can choose a Tuesday or Thursday session.

*10 places available for each day. Courses run throughout the year, so if you don't get on one you want, you can put your name down on the waiting list and will be contacted when the next is about to start.

Learning for pleasure

If you no longer work full time and are looking for a new learning or leisure pursuit in the New Year, the **University of the Third Age (U3A)** may have the answer.

U3As are learning cooperatives which draw on the knowledge, experience and skills of their own members to provide interest groups other members can join. The interest groups can cover just about anything from art, languages, music and history to sciences, philosophy, computing as well as crafts, photography and walking.

The U3A approach is 'learning for pleasure'. There is no accreditation or validation and there are no assessments or qualifications to bother about.

Local U3As

Rutland U3A: 300+ members. General meeting: first Thursday of the month at 10.30am in the Victoria Hall, High Street, Oakham. For more information, call **01572 755651**

Charnwood U3A: 600+ members. General meeting: second Wednesday of the month at Burleigh Community College, Loughborough. For more information, call **01509 561050** or send an email via the website: www.charnwoodu3a.org.uk.

Melton U3A: 500+ members. General meeting: third Thursday of the month at 10 am in the Baptist Church, Bowling Green Close, Melton. For more information, call **01664 565933**.

U3A's Coastline Calendar



The U3A 2011 Calendar features scenes from Britain's coastline photographed by its members. The choice for January (above) is 'Sound of Taransay', by Grant Timms, from the Wellingborough & District U3A. The calendar is available to order from the website: www.u3a.org.uk.

Windfarm at what cost?

A campaign group, STOP, is urging residents in the Melton area to find out the facts about on-shore windfarms. Renewable energy is necessary for our future, but problems at existing windfarms indicate they should not be located within 1¼ miles of people's homes.

Nine industrial turbines, up to 125m (410ft) tall, are proposed for open countryside near to Asfordby. STOP, which is representing local people opposed to the plans, believes the detrimental impact on the community will very much outweigh any benefits.

The rural site has not been identified as good for a windfarm. However, availability of the land and significant subsidies will allow the development to be both viable and profitable. Such large scale developments bring many issues, including noise, and will affect quality of life, enjoyment of the countryside and the value of property for years to come.

Object to Melton Borough Council if you believe this is not appropriate: it will be too late once planning has been approved.

For details, go to www.STOPtheTurbines.org or email info@stopheturbines.org



10% discount on all plants on production of this advert (VCOct) until 23/12/10

Free Christmas Workshops

Saturday 11th December 11.00am - 2.00pm

Come and visit the nurseries and learn the tricks of the professionals.

- Christmas wreath making
- Planting containers for winter colour
- How to decorate your tree
- Making Christmas bows

Christmas Trees in stock from 27th November.

Poinsettias, Cyclamens, Wreaths and much more.



Now Open 7 days a week 10 - 4pm
From 27th Nov - 23rd Dec.

T: 01664 434 974
Off the A607, Brooksby, Melton Mowbray, Leics, LE14 2LJ

“Kumon has given me the confidence to work on my own.”
Germain, 13 Walthamstow Study Centre

Boost your child's confidence with Kumon

Our maths and English study programmes work to give your child a foundation for learning both in and outside the classroom, building the self-confidence they need to succeed and grow.

Contact your local study centre today
Melton Mowbray Study Centre
Yvonne Nestor-Ryan **01572 823 884**

Classes at St Peter's Parish Centre, 77 Welby Lane, LE13 0ST
Drop-in classes each Tuesday from 4pm to 5.30pm and each Saturday from 10am to 11.30am. Open all year round.
10% sibling discount available.

KUMON
Developing independent learners
Fees vary. Please refer to your local study centre.

0800 854 714
kumon.co.uk

A gift to take a chance on

Here's an interesting and fun way to buy a present if you're prepared to take a chance on what you get!



Local jewellery maker **Becky Toughill** is offering 30 Christmas 'Lucky Dips' - 20 at £5 and 10 at £10.

This is how it works. Pay either £5 (Dip 1) or £10 (for Dip 2) and receive one of her handmade pieces of jewellery gift-wrapped and picked at random. For the £5 dips, the selected jewellery will be to the value of £5-10 and for the £10 dips the value will be £10-18.

To book your 'dip', phone Becky on **07834 162193** or go to the 'promotional' page of her website: www.beckytoughill.weebly.com and follow the instructions to pay online.

Becky hand-makes special paper, wire and fabric beads which she strings with found and recycled items.

Something for the needlepoint enthusiast



Designer **Julia Moore** (from Muston Gorse) and needlepoint practitioner **Helen Westropp** (Goadby Marwood) have collaborated to launch a range of tapestry kits under the name of **Tapestry by TexTiles**. A lovely gift idea for the right person!

The exclusive tapestry designs, which have been taken from Julia's original hand painted artwork, are inspired by the textiles, ceramics, and stone carvings of Asia, the Middle East and ancient Europe.

The kits range in difficulty from relatively simple to more complex. They cost from £65 to £75 plus P&P and will fit a 17" to 19" cushion, chair seat or stool cover.

You can get full details from www.tapestrybytextiles.com or by contacting Julia on 01949 842515 or Helen on 01664 464902.

Artists take their goods to market

There were plenty of Christmas gift ideas at Melton's newly launched Artists Market (in **Nottingham Street**) in October and November. Another will be held on **Saturday 18 December**.

"The market is a new initiative from Melton Borough Council to give local artists and artisans a venue to sell the outstanding range of products made in the region", explained the borough council's Arts Officer **Dee Sowden**.

"Their involvement gives a real energy to the area. We are hoping to extend the scheme again next year."

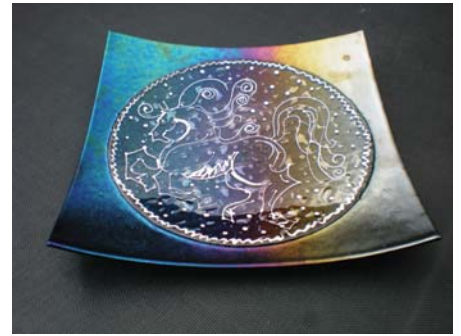
These are some of the people you can expect to find at the December market.

Knitting enthusiast **Vanessa Gardner** from **Wymondham** promises to have a very festive stall (see right) bulging with all kinds of gift ideas and seasonal items, such as Christmas stockings (from £2) in varying sizes, knitted handbags with wooden hoop handles (£3-5) and rag rug cushions. Look out also for her quirky recycled products, in particular her cake stands made out of old vinyl records (£18).

Melton artist **Claire Powell** will be selling her paintings, greetings cards and prints. Claire also takes commissions for pet portraits and paintings of your favourite building in 3D. For more information, go to www.squigglingsquirrels.com or call her on **07943 813791**.

Alison Yates, a sculptor, painter and art teacher from **Harby**, will be selling her kiln formed glass in the shape of useful items, such as large and small bowls, dishes and platters (see top picture). Also on sale will be her daughter Charlotte's original mixed media (with textiles) paintings. Both Alison and Charlotte can produce to order and can be contacted by email: belvoir1@hotmail.co.uk or by phone: **07791 745397**.

Also expecting to return in December are **Kate Humphreys** (from Nottingham), with her very affordable handmade handbags (ranging from £15 to £25) and Leicester-based photographer **Richard Cox** (www.richard-cox-photography.co.uk) who will be selling greetings cards and prints.



Software for that laptop

For more advice, or help with computer problems, call Dave on 01664 859505

Buying a laptop for someone this Christmas? If so, computer expert **Dave Rowe** has some advice before you commit to any software for it.



"Antivirus software is a must for any computer. The laptop will probably come with Norton or McAfee suites, usually with a 60-day limit (but not always, so check). If you're offered a special deal on antivirus software when you buy, check when the year is up as you could be stung for the full price of next year's updates if you follow their renewal steps and will almost certainly be able to buy a current copy more cheaply in the shops or on the internet. Check out Kaspersky Internet Security first at £23 for three computers for one year (amazon.co.uk) or AVG internet Security at £26 from www.grisoft.com. I use the free version of AVG antivirus (www.free.grisoft.com) with Ad-aware free from www.lavasoft.com and zonealarm free firewall from www.zonealarm.com.

"When buying the laptop, look out for discounts on Microsoft Office if bought at the same time; the 2010 version for three users is about £90 (ebuyer.com or Dabs.com). Alternatively, there are free office suites if you don't need MS Office for compatibility with school or work. See www.openoffice.org. If MS Office is already on the laptop you're buying, it's probably the limited use version that disables itself after 60 days."

'From your ever loving Daddy'

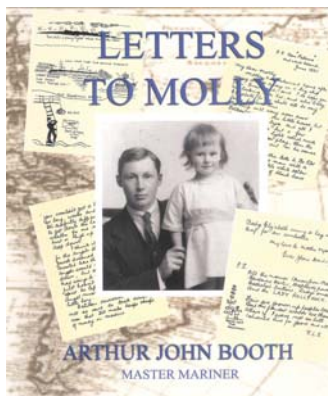
When Ann Thompson (who lives in Saxelbye) decided to delve into a battered old trunk full of family papers eight years ago, little did she realise where it would lead her! Along with her father's handwritten memoirs, she found a wad of letters he had written to her eldest sister Molly between 1921 and 1924, while he was away at sea. (He served in the merchant navy.)

Ann was so taken with the letters that she decided, with Molly's permission, to publish them. **Letters to Molly** went on sale in October this year.

What a talent **Arthur John Booth** had for communicating with his young daughter (Molly was just four when he started writing to her) and her little sister Elizabeth (born in 1920)! He 'spoke' to them with great affection and in a language they could understand, often adding drawings to illustrate the tales he was telling about his life as a mariner. Of Ann (born in 1923), he wrote: "I hope she is liking you both for I know she and mummy are very good chums and I want you to like her too."

In the foreword, Libby Purves describes turning the pages "with tearful delight". Every one of these letters is indeed delightful, and the fact that they have been reproduced from the originals helps the reader connect with both writer and recipient so much better than if they'd been typeset!

With these rediscovered letters now in print, Ann hopes to get her father's memoirs published next year. They will include over 30 reproductions of his paintings.



Letters to Molly (hardback, 150pp) costs £14.99 plus £3.50 p&p. To order a copy, go to www.maridadipublishing.com or telephone 07973 148583

The Melton Bookshop



01664 567769

meltonbook@aol.com

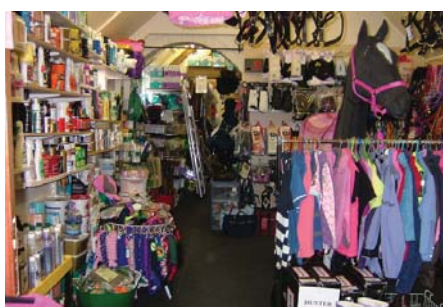
- Any In Print Books from UK/ USA
- Free out-of-print search available
- Difficult to find books
- Local interest titles
- 6000+ titles in stock
- Free delivery on orders over £20

www.themeltonbookshop.co.uk

5 Leicester Street
Melton Mowbray

The Clothes Horse

Equestrian supplies & outdoor clothing



TOGGI, AIGLE, MUCK BOOTS
& many more well known brands

Waterproof & warm coats

Everything for the horse & rider -
hats & body protectors fitted by qualified staff

Can't make it to the shop? Visit us online at

www.theclotheshorse.co.uk

THE CLOTHES HORSE LTD
Syston Grange, Barkby Road, Syston
Tel: 0116 260 9801

Wedding Photography

BY STUART HOLLIS



HOLLIS
PHOTOGRAPHY.COM
0116 210 6488
info@hollisphotography.com

In your garden

by Helen Osborne of Church View Nursery



Hello Gardeners,

It's that time in the garden when there's very little to do and there seems to be very little colour, so why not plant a collection of pots up near to the house. When selecting pots, always ask if they are frost proof, then use multipurpose compost, lift the pot from the ground by about an inch to allow the compost to drain, then go mad and pick the brightest of coloured pansies, violas, and cyclamen.

When you look at your garden in the winter you may think that there is nothing happening, but think again. The perennials that flowered over the summer months are looking very sad, but are laying dormant to surprise you again next summer, and the early spring flowering ones are just beginning to shoot ready to flower. If it wasn't for the cold snap of winter frosts we would not enjoy the snowdrops in the January, then the croci, followed by the daffodils. Now is the best time to enjoy the evergreen shrubs and perennials in your garden.

We may be snuggled up in the warm in front of a fire, but it is now that the wild birds really need a little help. If you decide to feed them, once you start please continue. A bird may use the last of its energy and body heat to feed from your bird table in order to survive. As well as food, water is also important. If you look after the birds in the winter, they will help to rid you of the pests in summer, plus entertain you when they come to nest in your garden.

Plants of seasonal interest

Mahonia Charity (pictured above); very fragrant yellow flowers, height 3m.

Sarcococca hookeriana; tiny fragrant flowers, height 1.2m.

Cornus alba Sibirica, attractive red stems, height 2m.

Heuchera Caramel; pale caramel foliage that stands out in the border, height 40cm.

You can heal yourself

by Gil Riley of Tranquil Therapies

Reiki (pronounced Ray-key) is a gentle, non intrusive healing technique which helps promote our body's own natural healing ability on all levels.



In our body we have seven major energy centres known as Chakras and as each Chakra is linked to a specific part of our body they have a significant influence on our physical health and general well being. If the flow of energy in our body becomes disrupted for any reason (such as through stress, grief etc) this causes an imbalance in our energy system which can lead to physical or emotional illness and pain. The deep relaxation of Reiki allows the gentle release of the blocked energy, cleanses the body of toxins and increases energy flow throughout the body. Once our energies are balanced and flowing freely, our body can begin to heal itself.

You don't need to be ill to benefit from Reiki; a Reiki treatment is the ultimate relaxation experience and is great for relieving stress! Anyone can learn Reiki; it is simply passed from teacher (Reiki Master) to student. There are three degrees (or levels) Reiki I, II and III. Reiki I is an introduction, with the emphasis on personal development and self healing. You will also learn the hand positions to enable you to carry out a full Reiki treatment on yourself, family and friends.

Continued next page

Church View Nursery

QUENIBOROUGH ROAD, BARKBY

Christmas trees & wreaths

Christmas gifts

Logs and coal

Orders taken for

Christmas fruit and veg
from early December

Wild bird food



FRIENDLY, PERSONAL SERVICE

Tel: 0116 269 5505

Open weekdays 9.30am-5.30pm (Wed 9.30am-1pm),
Sat 9.30am-5pm, Sun 9.30am-1pm

CO₂ARB
the green tree company

The new uk tree company who will replace tree for tree within the uk community, reducing the immediate local impact

Honest Tree Care by Qualified Tree Surgeons -

We specialise in:

- Soil Analysis and Fertilization
- Tree Planting
- Root Care and Tree Pruning
- Sectional Felling
- Crown Lifting and Reductions
- Stump Removal
- Hedges



All work to BS 3998.

Fully insured and qualified.

City & Guilds
NPTC
Qualified



189212

m: 07954 428 289 t: 01509 822 502

e: sam@co2arb.co.uk w: www.co2arb.co.uk

You can heal yourself (cont.)

If you are interested in learning Reiki you will need to contact a Reiki master to discuss availability of courses, fees etc. Courses last one or two days. It's worth booking a treatment with a Reiki master teacher/practitioner in order to experience Reiki for yourself before embarking on the course.

Gil Riley is a Reiki Master Teacher/Practitioner based in Old Dalby. See the advert below for how to contact her for information about learning Reiki or to arrange a Reiki treatment.

Tranquil Therapies

- Reflexology ★ Reiki ★ Crystal healing
- Emotional freedom technique
- Bach flower remedies
- Hopi ear candling
- Stress management

★★★

Gift vouchers available

For further details or to book your appointment visit www.tranquil-therapies.co.uk

contact gill on 07787 175335

or email gillriley@tranquil-therapies.co.uk

Activity friends needed

Are you a good communicator who enjoys spending time with people? If so, then Voluntary Action Melton needs you!

Activity Friends are volunteers who visit older people in their own home who have had a fall or are at risk of falling to encourage and motivate them to do their gentle Otago exercises. The Otago exercise programme is a series of muscle strengthening and balance retraining exercises that will be taught to the older person by a trained professional. You will not be teaching the exercises but will be there to motivate the older person and be a friendly ear!

Voluntary Action Melton are asking you to donate 1-2 hours a week of your time. In return you will receive training & support, out-of-pocket expenses, opportunities to get together with other volunteers and the



chance to make a difference to the lives of older people. Hopefully, you'll develop a mutual friendship and look forward to seeing each other.

The aim is to reduce the number

of older people having a fall and increase their mobility and confidence so that they can carry on living their lives independently. The Otago programme has been used worldwide and is used by several NHS's across the UK.

If you would like to donate your time or just find out more, call Catherine on 01664 485302 or email catherineh@voluntaryactionmelton.org.uk.

This project is working in partnership with the Melton & Rutland Falls Prevention Team and is funded by the Health & Social Care Volunteering Fund.

HAPPY TURKEYS

Ready for Christmas

FREE!
One of our REINDEER PIES with every Christmas meat order.*



* Min. order £50 while stocks last. Quote VC11 When ordering

Available to order now, free-range Bronze Turkeys, raised locally in Croxton Kerrial by W E Bofferill, one of Rick Stein's "Food Heros".

Orders must be in by Dec 6th. Please drop in, phone or download a form from our website

Brockleby's Farm Shop, Asfordby Hill, Melton Mowbray, Leicestershire LE14 3QU
Tel: 01664 813200 www.brocklebys.co.uk

WANTED: VINTAGE FOOTAGE & PHOTOGRAPHS

Nottinghamshire YMCA has launched 'A Century of Youth', a film project exploring the lives of young people in the East Midlands over the past 100 years. It will be led by 16 young people who are looking for help. If you have old cans of film, VHS tapes or photographs that offer an insight into growing up in the area over the last century, get in touch with Rebecca Lawson or Thomas Hall at Nottinghamshire YMCA's Film & Video Department on 0115 855 3365 or email film@nottsymca.org.

PMC & Son Ltd
Your local heating engineer

All areas covered!

He can...

- Repair, install and service your boilers
- Repair and service your central heating system including, gas, oil & LPG
- Provide landlord safety certificates
- Give you a free estimate
- Solar & air source fitting



New Ideal Logix + combi boilers with 5 year guarantee

Other boilers available & serviced



CRB police checked



call **01664 561008**
07794 712706

peter@pmcplumbingandheating.co.uk www.pmcplumbingandheating.co.uk



December

- 3 Wymeswold Memorial Hall**, 8pm. Martin Simpson in Concert. Tickets & information: 01509 880277.
- 3-7 St Marys Church, Melton** Christmas Tree Festival. Hundreds of decorated trees from local schools, families and businesses. Tel: 01664 851457.
- 4/5 Oakdale Farm Shop, Rearsby**, 9-10am & 10-11am, Breakfast with Santa. Booking essential. Tel: 01664 424300.
- 4-7 Sage Cross Methodist Church, Melton** Festival of cribs. Over 50 nativity scenes from all over the world. For details, phone 01664 854748.
- 4-12 Melton Theatre**, Snow White pantomime. See page 12.
- 5 Melton Town Centre**, 10am-4pm Victorian Christmas Fair. Festival market with gifts, crafts and local produce plus Punch & Judy, brass bands, Morris dancers etc.
- 9 St Peter's Church, Redmile**, 7.30pm. Martin Simpson in Concert. Tickets & information: 07970 387240.
- 9-21 Vale of Belvoir** (various locations) Christmas Collections with Santa's sleigh organised by the Vale of Belvoir Lions. See www.vobliions.org.uk.
- 9-12 Wreake Valley Community College, Syston**, Syston & District Operatic Society (SADOS) perform Jack & the Beanstalk. See page 12.
- 10 The Barn, Manor Farm, Rearsby**, 7.30pm. Hi&Lo, American blue grass/folk duo. £8 (includes glass of mulled wine & mince pie). Tel: 01664 424239.
- 10/11 Launde Abbey, East Norton**, 7pm. Cabaret evenings. See page 3.
- 11 Melton Carnegie Museum**. Christmas craft activities. See page 4
- 11 St Mary's Church, Melton**, 7.30pm. Global Harmony Christmas Concert. See advert this page.
- 11/12 Oakdale Farm Shop, Rearsby**, 9-10am & 10-11am, Breakfast with Santa. Booking essential. Tel: 01664 424300.
- 14 Waltham on the Wolds Village Hall**, 7pm. Oxfordshire Theatre Company presents Alice in Wonderland. A new version by Neil Duffield with puppetry, song and dance. Tel: 01664 464115.
- 17 Harby Village Hall**, 7pm. Fairgame Theatre Company presents Cinderella. A 70s version with big flares and disco dancing. Tel: 01949 861422.
- 18 Charnwood Museum, Loughborough**. ArtZone festive workshop. See page 4.
- 18 Melton Town Centre**. Artist Market in Nottingham Street. See page 6.

- 18/19 Rutland Railway Museum, Cottesmore, Oakham**, 11am-5pm. Santa Special. Come and see Santa, ride on a steam train and post letters at the 'North Pole'. For details contact Phil Marston: rrm.info@btinternet.com.
- 18-21 St Mary's Church, Harby**, 12-5pm. Dickensian themed Christmas Tree Festival with additional floral arrangements. Refreshments. Free entry.
- 19 Melton Town Centre**. Christmas Classic Car & Bike Meet & Men's Shopping Experience. Free gift wrapping service and free pint vouchers from participating pubs.
- 22 Charnwood Museum, Loughborough**. Xmas lantern workshop. See page 4.
- 24 Melton Town Centre**, 10am-2pm. Christmas Eve Market. Local produce, wines and beers, crafts and gifts. Free parking in long stay car parks.
- 26 Wash Dyke Bridge, Grantham Road, Bottesford**, 11am. Duck Race down the River Devon. Ducks £1 each from local businesses. Post-race entertainment. See www.vobliions.org.uk.
- 26 Seven Arch Bridge, Rearsby**, from 10am. Tug-of-War across the brook, followed by Duck Race. Free food & music at The Horse & Groom (01664 424242) & The Wheel (01664 420208) from 12.30pm.

January

- 13 Hose Village Hall**, 7.30pm. Shoo Shoo Baby presents The Entire History of Cabaret. The effortlessly funny double act return. Tel: 01949 86070.
- 14 Bottesford Victory Commemoration Hall**, 7.30pm. Vamos Theatre Company presents Nursing Lives by Rachael Savage. (set in World War II). Tel: 01949 842215/842868.
- 14 Asfordby Parish Hall**, 6.30pm. Northumberland Theatre Company presents Beauty and The Beast by Mike Kenny. Tel: 01664 81217.
- 20 Long Clawson Village Hall**, 7.30pm. The New Budapest Café Orchestra in concert. Tel: 01664 822247.
- 21 Kirby Bellars Village Hall**, 7.30pm. The New Budapest Café Orchestra in concert. Tel: 01664 813938.
- 23 St Peter's Church, Redmile**. 7.30pm. The Opera Dudes: The Godfathers of Croon. Tel: 07970 387240.
- 28 Burton Lazars Village Hall**, 7.30pm. Shoo Shoo Baby presents The Entire History of Cabaret. Tel: 01664 567752.
- 28 Burton on the Wolds Village Hall**, 7.30pm. Musician of the Year: Tom McConville Trio. Tel: 01509 881369.
- 30 Hoby & District Village Hall**, 7.30pm. Shoo Shoo Baby presents The Entire History of Cabaret. Tel: 01664 434120.

February

- 2-5 Harby Village Hall**. Pantomime: Jack & The Beanstalk. See page 12.
- 12 Rearsby Village Hall**, 7 for 7.30pm. Abba-themed Murder Mystery with supper (bring your own drinks). £10 each. Tickets & information from Ann Bassett: 01664 424376 or Kathy Ledger: 01664 424311, kathyledger@gmail.com. Proceeds to Friends of Rearsby Church.



GLOBAL HARMONY CHRISTMAS CONCERT
 Saturday December 11th at 7.30
 St Mary's Parish Church
 Melton Mowbray, LE13 0PN
 seasonal and other songs from
 around the world
 Tickets £7 (£6) under 16 free
 including refreshments, on the door or
 contact 01664 562215
 All proceeds to
CRUSE BEREAVEMENT CARE

Want to take part in the Tug-of-War in Rearsby on Boxing Day (all welcome, children included), or help out with this fundraising event? Sign up to do either at The Wheel or Horse & Groom, or call Steve on 01664 424242.



To get your event listed (free of charge), phone 01664 424254 or email louise@villageconnect.co.uk

Send details of events that have missed the print deadline to louise@villageconnect.co.uk or post them on the VC Facebook page

While every effort is made to ensure information in the Diary is correct, Village Connect cannot be held responsible for any errors it contains

Classified businesses

ACCOMMODATION

MANOR FARM B&B, REARSBY

18th century farmhouse & arable farm
in the heart of the village

One twin, one double room (both en-suite) with all
the facilities plus home-made biscuits

Delicious breakfast using local produce

Call 01664424239 or 07725705150 or
email manorfarmb.b@hotmail.co.uk

ARTWORK & GIFTS



Personalised
cards, paintings &
illustrations

by Loughborough
based artist

http://anotherhp.wordpress.com
t: 01509 217092
e: JohnathanHawker@gmail.com

Another Hawker Production

County Crafts

Border Fine Arts, Crabtree & Evelyn
Kipling Handbags, Jewellery
Prints (limited eds/originals)
Framing, Unusual gifts

5-7 Windsor Street, Melton Mowbray
01664 480812
www.countycrafts.co.uk

BUILDING WORK

www.**MELTON**
CONSTRUCTION.co.uk

New Builds Renovations
Extensions Conservatories
Alterations Landscaping

Call Now For a FREE Quote

Ben: 07891 613 302 Glen: 07912 617 581
enquiries@meltonconstruction.co.uk

DANCE CLASS

The Jive Den

Dance classes at Rearsby Village Hall
Sundays from 8pm (doors open 7.45pm)

Modern jive/Latin/blues
Beginner, refresher & intermediate classes

Call Paul on 07837 136655
www.thejiveden.co.uk

DOMESTIC SERVICES

High Class Ironing



1487 Melton Road, Queniborough
Domestic & commercial dry cleaning, ironing, laundry
service, alterations and repairs

0116 260 9162 / 0774 903 0858

ELECTRICAL SERVICES

DS ELECTRICAL

Domestic & Commercial Installations

Rewires Sockets
Lighting Showers
Fuse Boards Fault Finding



Inspection - Testing - Certification
07791 432 496

davestanyer@gmail.com

Dedicated to Quality Customer Service

WILSON ELECTRICAL SERVICES

Emergency 24 Hour Call Out
Domestic, Commercial & Industrial
Reliable, Prompt & Friendly Service
'Part P' Registered - Property Maintenance

No job
too small

01949 860889

wilsonelecsev@aol.com

PARTY ENTERTAINERS

Children's Entertainment, Circus Workshops,
Parties, Face Painting, Promotions,
Walkabout Characters.....
... & lots more FUN!!

Helen Humphreys
T: 0777 937 2326
E: info@funkeyproductions.co.uk
Web: www.funkeyproductions.co.uk



HEALTH & BEAUTY



9 King Street
Melton Mowbray
Tel: 01664 560613

Melton Times Business Awards
Winner: Best Independent Retailer 2010

wide range of pampering treatments
in a calm relaxing atmosphere
24 hour online booking

www.beautyboxmelton.com

Mobile Hairdresser & Barber

For Men, Woman & Children.



High Quality Hairdressing,
At Affordable Prices.



For A Relaxed & Professional Service.
Telephone Sue On: -
01664 852632 or 07971638612

PET CARE

Dial-a-Dog-Wash

We come to your home in our
customised heated mobile grooming parlour

Warm water Hydro Bath
Shampooing Flea Treatment Conditioning Turbo Drying
Clipping & Grooming Deodorizing ID Microchipping

YOUR DOG DESERVES IT!

Covering LE13/14/15

Call Steve: 07988 734763

PLUMBING

A.S.H. PLUMBING & HEATING SERVICES

Bathrooms / Showers / En-suites
Central Heating Systems, Boilers & Fires
Plumbing Installations, Tiling, General Repairs

24 HOUR EMERGENCY SERVICE

01664 420024 / 07989 515548

GARDEN & TREE SERVICES

REARSBY LANDSCAPES

Colin Simpson Reliable Gardener

Mobile 07984 620148
Home 01664 424045
Email rearsbylandscapes@hotmail.co.uk

OAP Discount
Free No Obligation Quote
Full Liability Insurance

DALBY TREE CARE

Professional Tree Surgery

All Aspects of Tree & Hedge Work Undertaken
Stump Grinding/Removal.
Experienced, qualified & insured
Domestic & Commercial.

Contact Henry on:
07977477009 or 01664563982

UPHOLSTERY REPAIR



Advertise your business here

and get your name and message to 5,500 homes in NE Leicestershire

PRICES (per issue)

Small display (60x25mm): £15 for 1 issue, £13 for 3-5 issues, £10 for 6 issues

Large display (60x40mm): £20 for 1 issue, £18 for 3-5 issues, £15 for 6 issues

To book your space call 01664 424254

Meet the Harby Harlequins

The Harby Harlequins Drama Group have been entertaining people with their annual pantomimes for 13 years. Their next production will be **Jack and the Beanstalk**, which you'll be able to see at the **Harby Village Hall** at the beginning of **February**. (See below for how to get tickets.)

The Harlequins describe themselves as 'a more than able group, with ages ranging from early teens to early retirement, who put on

an amateur show with a very professional outlook'. Their scripts are entirely original; they hire professional costume and lighting/sound equipment and have their own lighting and sound engineers. Live music (5/6 piece band) accompanies each performance with some songs written specifically for the show. A choreographer, musical director and director pull the whole thing together.

The group also puts on a cabaret-style summer show which always sells out.

The Harby Harlequins Drama Group is a non funded, non profit-making registered charity and all profits are donated to local good causes.



The cast of *The Three Musketeers* (2008)

The Harlequins' Jack & the Beanstalk will be performed nightly from Wednesday 2 to Saturday 5 February at 7.30pm (Saturday Matinee at 2pm). Tickets cost £7.50 (adults) and £4 (children under 16) and go on sale on 5th January. To buy tickets, call Judith Neale on 01949 860713 between 10am & 7pm Monday to Saturday.

Other pantos showing locally



Wreake Valley School, Syston, 9-12 December (9/10: 7pm, 11/12: 2pm).
Jack & the Beanstalk
£7.50 adults, £5.00 children/concess.
Discount for groups of 10+. Tel: 01455 230150.

NB: Strobe & UV lighting to be used during performance.

Loughborough Town Hall, 27 November - 9 January 2011
Cinderella

Tel: 01509 231914 or book online @ www.loughboughtownhall.co.uk/booking

Melton Theatre, 4-12 December
Snow White with a pantomime twist performed by the Trevonne Stage School.
£6.50-£15. Tel: 01664 851111 or 566000

Stonehill High School, Birstall, 10 & 11 December
Babes in the Wood. £6. For times and tickets phone 0116 283 1646

Little Theatre, Leicester, 17 December - 8 January
Aladdin. £13/12. For times & tickets phone 0116 255 1302

FENSA
Registered Company

Midland Window Installations Ltd

Est. 1978

Another Quality Conservatory Installation

Specialist in PVC-U Doors, Windows & Conservatories

Unit D, Wanlip Hill Farm Business Park
(formerly Bentley's Roses)
Loughborough Road, Wanlip, Leicester LE7 4PN

Tel: 0116 267 6167 • Fax: 0116 267 4016
Mobile: 07860 548226

www.midlandwindows.co.uk
sales@midlandwindows.co.uk

Riverford

a farm Christmas delivered to your door

award-winning organic veg, meat and all the trimmings
fresh from our farm delivered free to your door

0845 600 2311 www.riverford.co.uk